



City Region Deal Annual Report 2018-19

EDINBURGH AND SOUTH EAST SCOTLAND
CITY REGION



Contents

<u>Executive Summary</u>	2
1. <u>Foreword</u>	4
• <u>Cllr Adam McVey, Convener, Joint Committee</u>	4
• <u>Leeann Dempster, Chair, Regional Enterprise Council</u>	5
2. <u>City Region Deal Overview</u>	6
3. <u>Financial Statement</u>	9
4. <u>Governance Overview</u>	12
5. <u>Monitoring and Evaluation</u>	15
6. <u>The Deal</u>	16
• <u>Research, Development and Innovation</u>	16
• <u>Integrated Regional Employability and Skills</u>	36
• <u>Transport</u>	41
• <u>Culture</u>	45
• <u>Regional Housing Programme</u>	47
7. <u>The Year Ahead</u>	50
8. <u>Contacts and Further Information</u>	51

Publication date: Wednesday 28 August 2019

Executive Summary



The Edinburgh and South East Scotland City Region Deal, signed on 7 August 2018, sets out a compelling vision that builds on the city region's unique strengths to deliver a number of transformational programmes and projects across Innovation, Skills, Transport, Culture and Housing themes that will deliver a step-change in inclusive growth to benefit the city region, Scotland and the United Kingdom.

Over £1.3 billion is being invested into the city region over the next 15 years. UK and Scottish Governments will each contribute £300 million, with the remainder coming from partners: the six member authorities - The City of Edinburgh, East Lothian, Fife, Midlothian, Scottish Borders and West Lothian Councils; the city region's universities and colleges; and the private and third sectors.

This annual report summarises progress for the first year of the programme. Of the 24 projects and programmes within the City Region Deal:

- 9 are classified as Stage 1: "Define"
- 13 have reached Stage 2: "Implement"
- 2 have reached Stage 3: "Deliver"

£49.0 million of Government money was drawn down in the 2018/19 financial year for: the Bayes Centre, National Robotarium, Edinburgh Futures Institute, Edinburgh Living and the grade separation at Sheriffhall Roundabout. This is expected to significantly increase for 2019/20 as projects progress towards delivery.

Significant progress has been made in establishing the new Governance Structure. Ten Boards are now fully-formed and meet as required. The Joint Committee has approved eight business cases and seven project propositions, worth £704 million or 53% of the 15-year programme; the Regional Enterprise Council is actively shaping the emerging regional growth framework and community benefits programme; thematic boards are meeting to set the strategic direction across Data-Driven Innovation, Skills, Transport and Housing themes; and Programme Management Office resources have been enhanced to manage the emerging programme.

Looking ahead towards 2019/20, significant developments are expected, including:

- **Projects:**
 - construction at Dunard Centre, Central Borders Innovation Park, two industrial estate generation sites in Fife and of homes in several of the strategic housing sites; and
 - piloting skills projects in Housing and Construction Infrastructure, Data-Driven Innovation, and Intensive Family Support.
- **Monitoring and Evaluation:**
 - Regional Partners are working with Government on a Monitoring and Evaluation Framework that will track the progress and impact of City Region Deal projects. Partners aim to have the framework agreed by the end of 2019.
- **Regional Growth Framework:**
 - Regional partners are also developing a Regional Growth Framework and accompanying Regional Spatial Strategy to inform the Scottish Government's National Planning Framework 4 and Strategic Transport Projects Review 2 by the summer of 2020. This will also set the strategic direction for regional partners to work together to accelerate inclusive growth outcomes through the emerging City Region Deal programme, and across related housing, planning, transport and economy policy areas.

1. Foreword

Cllr Adam McVey

Convener of the Edinburgh and South East Scotland City Region Deal Joint Committee

Together with regional partners, the First Minister of Scotland and Prime Minister of the United Kingdom, I signed the Edinburgh and South East Scotland City Region Deal on 7 August 2018. The City Region Deal brings together, the Scottish Government, the UK Government, six local authorities, four universities and six colleges in a partnership to accelerate sustainable and inclusive economic growth across the region. Over £1.3 billion will be invested over the next 15 years across the themes of innovation, skills, transport, culture and housing to help realise this ambition.



The Deal signing was the culmination of several years' hard work identifying challenges and opportunities, developing an effective response, and shaping the business cases and governance structure that articulates how we will implement our ideas. As the first Convener of the Joint Committee, I am delighted to have seen the partnership continue to strengthen and progress throughout the first year of implementation and delivery.

Since the signing our Deal, the Joint Committee has approved eight programme and project business cases and seven skills project propositions worth £704 million or 53% of the 15-year programme.

The investment through the City Region Deal will deliver a real difference to communities across the region. The Deal will create around 21,000 jobs; it will promote world-leading research, development and innovation in our universities and new employment hubs; it will develop a skilled workforce to meet demands in emerging sectors, initially focusing on data and construction, and help tackle the inequalities that exist in some of our industrial sectors. The Deal enables the first purpose-built music venue Edinburgh for 100 years with Dunard Centre; it will improve regional transport infrastructure; and it will enable the construction of much-needed new housing, including affordable housing. Inclusion is at the heart of the Deal; while we are boosting our engine for economic growth, we are working hard to ensure that the benefits of this growth are shared by all our citizens throughout Edinburgh and South East Scotland.

Leeann Dempster

Chair of Regional Enterprise Council

As Chair of the Regional Enterprise Council (REC), I am delighted with the progress that has been made in Year 1 of the City Regional Deal.

The Regional Enterprise Council was formed in November 2018, and is here to advise the Deal's decision-making body, the Joint Committee, on the delivery of projects across the region. Alongside Vice Chair Claire Pattullo of the Edinburgh Social Enterprise Network, I sit on the Joint Committee.

While the REC is not decision-making body, it has a significant role in shaping strategic direction and supporting the implementation of the Deal to ensure that the benefits flow to our region's businesses and communities.

An early win will be the joint work with partners on a new regional growth framework, to provide the economic resilience that is much needed by our businesses and third sector organisations in the face of current and future uncertainty and help position the region to more effectively exploit future inclusive growth opportunities and maximise the value of City Region Deal investments.

With a climate emergency recently declared, sustainable place-making must be at the heart of new developments that will come through over the next 15 years of the Deal. Housing must be of the highest standard; there must be excellent public and active travel links; Fair Work practices must become commonplace, and new developments must be thought of as communities from the outset with residential, work, health and education amenities all accessible.

We are also pleased to see that a pro-active and coordinated approach to securing community or social benefits from partner activities has been agreed. This will strengthen and simplify the process for organisations bidding for tenders and ensure that a big difference can be made to our communities most in need. We look forward to working with local authorities and universities and colleges as we shape the emerging community benefits strategy.

By working together, we can deliver the coordinated, strategic improvements needed to help the entire South East of Scotland achieve its full potential.



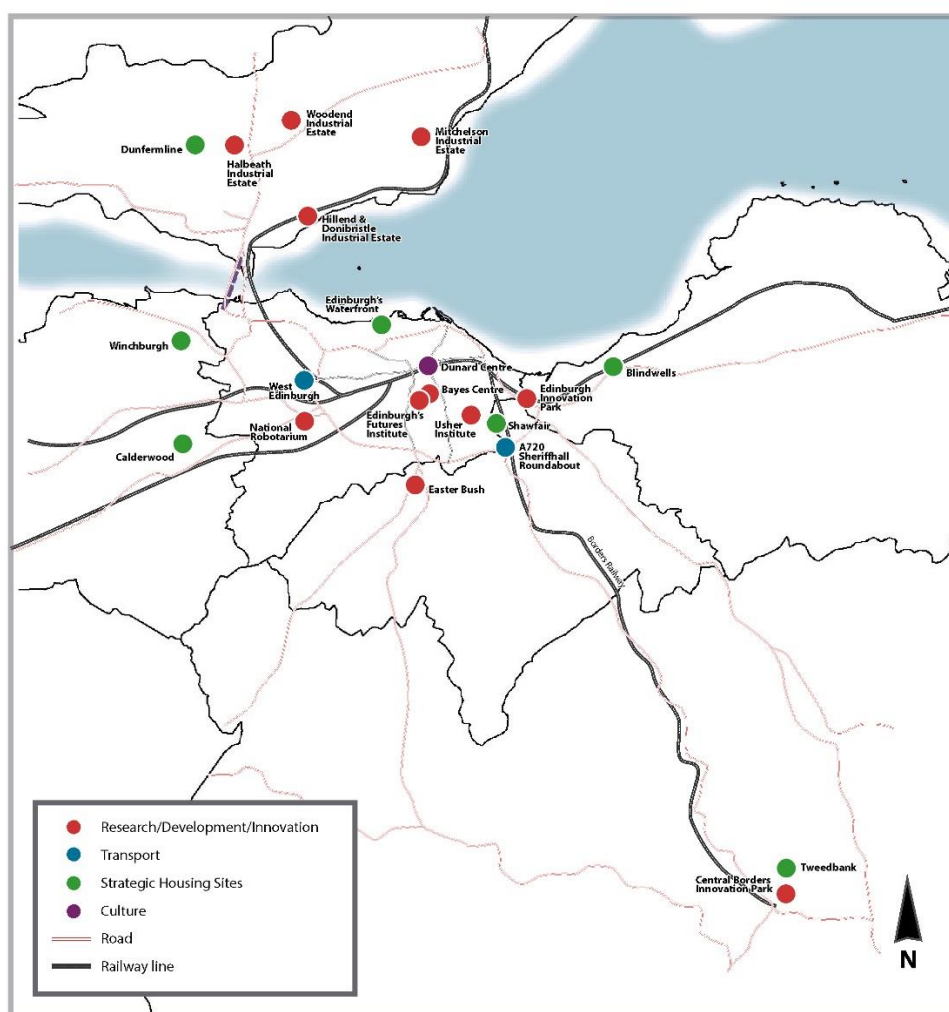
2. City Region Deal Overview



The Edinburgh and South East Scotland City Region Deal is a £1.3 billion, 15-year programme aimed at driving productivity and reducing inequalities through five key themes:

- Research, Development and Innovation: £791 million
- Integrated Regional Employability and Skills: £25 million
- Transport: £156 million
- Culture: £45 million
- Housing: £313 million

The map below shows where the projects are located across the region:



The City Region Deal projects are listed in the table below. More detail on the projects can be found within the Deal Document, and, if published, its business case.

Summary of Programmes and Projects

Theme/Programme/Project	Location	(Expected) Business Case Approval	Stage	On Time?	On Budget?
Research, Development and Innovation					
World Class Data Infrastructure	Edinburgh/ Midlothian	Dec 18	2. Implement		
Bayes Centre	City of Edinburgh	Dec 18	3. Deliver		
National Robotarium	City of Edinburgh	Dec 18	2. Implement		
Edinburgh Futures Institute	City of Edinburgh	Mar 19	2. Implement		
Usher Institute	City of Edinburgh	<i>Sep 19</i>	1. Define		
Easter Bush	Midlothian	<i>Dec 19</i>	1. Define		
Edinburgh Innovation Park (Food and Drink Innovation Hub)	East Lothian	<i>Jun 20</i>	1. Define		
Fife Industrial Innovation Investment	Fife	Mar 19	2. Implement		
Central Borders Innovation Park	Scottish Borders	Mar 19	2. Implement		
Integrated Regional Employability and Skills	<i>Cross-Regional</i>	Dec 18	2. Implement		
• <i>Integrated Knowledge Systems</i>	<i>Cross-Regional</i>	Jun 19	2. Implement		
• <i>Labour Market Analysis and Evaluation</i>	<i>Cross-Regional</i>	Jun 19	2. Implement		
• <i>Integrated Employer Engagement</i>	<i>Cross-Regional</i>	Jun 19	2. Implement		
• <i>Intensive Family Support</i>	<i>Cross-Regional</i>	Mar 19	2. Implement		
• <i>Data-Driven Innovation Skills Gateway</i>	<i>Cross-Regional</i>	Mar 19	2. Implement		
• <i>Housing and Construction Infrastructure Skills Gateway</i>	<i>Cross-Regional</i>	Mar 19	2. Implement		
• <i>Workforce Mobility</i>	<i>Cross-Regional</i>	Jun 19	2. Implement		
Transport					
West Edinburgh	City of Edinburgh	TBC	1. Define		
A720 (Sheriffhall Roundabout)	City of Edinburgh/ Midlothian	TBC	1. Define		

Culture					
Dunard Centre	City of Edinburgh	Dec 18	2. Implement		
Housing					
Affordable housing programme	Cross-regional	TBC	1. Define (and 3. Deliver)		
Strategic sites	Cross-regional	TBC	1. Define (and 2. Deliver)		
Innovation and skills	Cross-regional	TBC	1. Define		
Infrastructure, funding and land assembly	Cross-regional	TBC	1. Define		
Housing company	Cross-regional	TBC	3. Deliver		

Legend:

Project Stages

Stage no.	Definition
1. Define	Business case being developed, and not yet approved by Thematic Board and Joint Committee.
2. Implement	Business case has been approved by Thematic Board and Joint Committee, and is being implemented. In a capital project, this may be construction; for skills projects this may be establishing a course or system.
3. Deliver	Project is in place and monitoring and evaluation is in framework to assess if it is achieving its objectives.
4. Legacy	Project has resulted in mainstreaming or improvements to business as usual (impact) that is generated beyond the funded period

Red, Amber, Green

T: Status against **timeline** set out in business case/implementation plan; B: Status against **budget** set out in financial plan

RAG Status	Definition - Timeline	Definition - Budget	Action Required
Green	In line with business case/implementation plan	In line with financial plan.	No management action required
Amber	Delay is considered acceptable by PMO.	Within acceptable range.	Management action is in place by senior management to address issues, and project is being closely monitored.
Red	Delay is significant.	Outwith acceptable range.	Immediate action is required by senior management and relevant Boards as appropriate to address issues. Issues must be highlighted to Government.

3. Financial Statement



This transformative City Region Deal identifies new and more collaborative ways that partners will work with UK Government and Scottish Governments to deliver transformational change to the city regional economy. The Governments will jointly invest £600 million over the next 15 years and regional partners committed to adding in excess of £700 million, overall representing a deal worth £1.3 billion. A summary of the City Region Deal total over a fifteen-year period is shown in the table below:

Edinburgh and South-East Scotland City Region Deal Financial Summary

Project	Scot Govt contribution (£m)	UK Govt contribution (£m)	Partner contribution (£m)	Total amount (£m)
Research, Development and Innovation	60.00	290.00	441.12	791.12
Bayes Centre	2.24	30.31	68.50	101.05
National Robotarium	1.43	21.04	-	22.47
Edinburgh Futures Institute	2.24	55.68	131.38	189.30
Usher Institute	0.73	48.46	35.40	84.59
World Class Data Infrastructure	0.67	78.93	111.03	190.63
Easter Bush	1.27	16.10	25.23	42.60
Easter Bush Link Road	-	10.90	19.10	30.00
Food and Drink Innovation Campus	1.42	28.58	22.00	52.00
Business Innovation – Fife	35.00	-	14.43	49.43
Business Innovation – Scottish Borders	15.00	-	14.05	29.05
Total Integrated Regional Employability and Skills(IRES)	25.00	-	-	25.00
IRES	25.00	-	-	25.00
Total Transport	140.00	-	16.00	156.00
Sheriffhall Roundabout Upgrade*	120.00	-	-	120.00
West Edinburgh Public Transport Infrastructure	20.00	-	16.00	36.00
Culture	10.00	10.00	25.00	45.00
Dunard Centre	10.00	10.00	25.00	45.00
Total Housing	65.00	-	248.00	313.00

New Housing Partnership (Edinburgh Living)	15.00	-	248.00	263.00
Housing Infrastructure	50.00	-		50.00
GRAND TOTAL	300.00	300.00	730.11	1,330.11

**Includes £120m for Sheriffhall roundabout to be delivered by Transport Scotland*

The Edinburgh and South-East Scotland City Region Deal Financial Summary for the period of April 2018 to March 2019 is set out in Table 2. Total expenditure and grant claimed for the year, amounts to £46.40 million.

Edinburgh and South-East Scotland City Region Deal Drawdown from Governments 2018-19

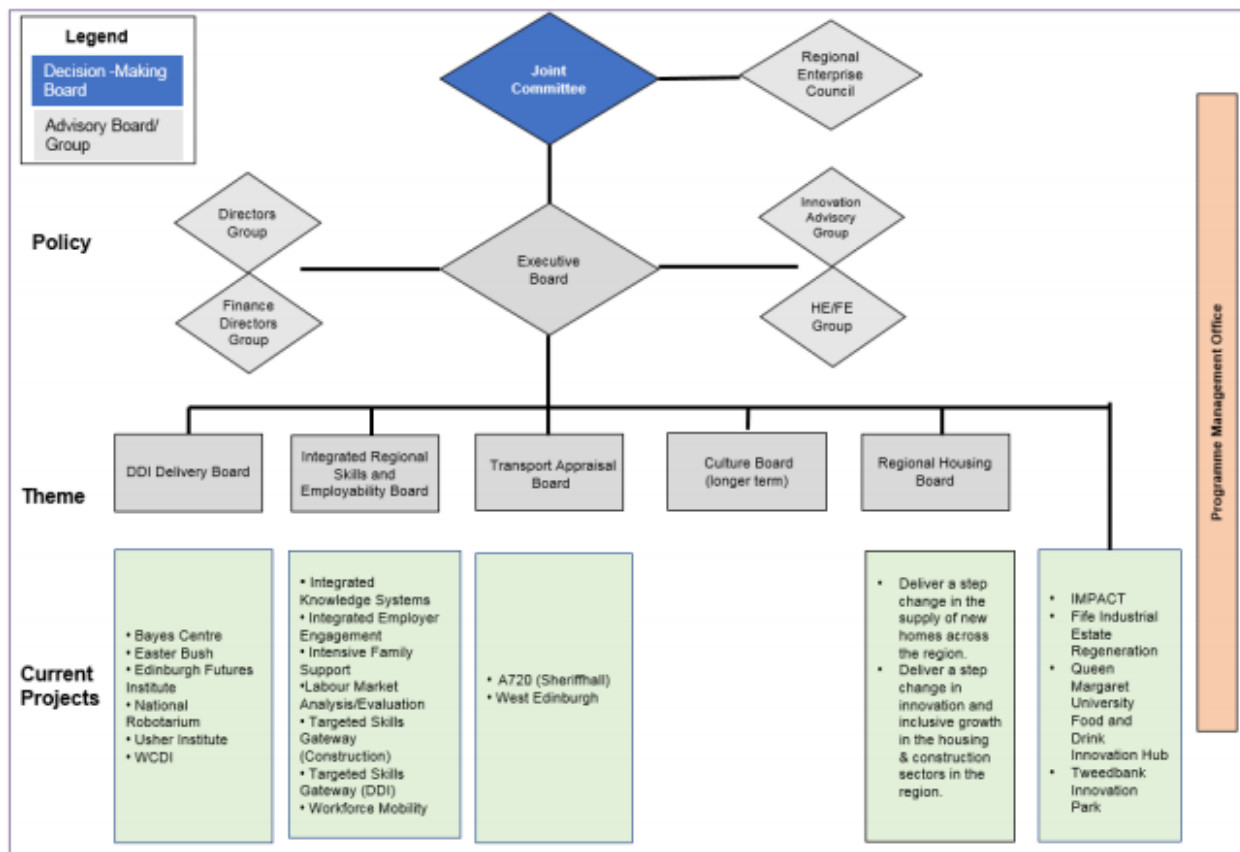
Project	Lead Partner	2018-19 Spend (£'000)	CRD Grant claimed £000	CRD Grant % claimed
Research, Development and Innovation		41,344.00	41,344.00	
Bayes Centre	U of E	22,412.00	22,412.00	68.86%
National Robotarium	Heriot-Watt/ U of E	70.00	70.00	0.31%
Edinburgh Futures Institute	U of E	18,862.00	18,862.00	32.57%
Usher Institute	U of E	-	-	-
World Class Data Infrastructure	U of E	-	-	-
Easter Bush	U of E	-	-	-
Easter Bush Link Road	Midlothian Council	-	-	-
Food and Drink Innovation Campus	East Lothian Council / QMU	-	-	-
Business Innovation – Fife	Fife Council	-	-	-
Business Innovation – Scottish Borders	Scottish Borders Council	-	-	-
Integrated Regional Employability and Skills Programme		-	-	-
Integrated Regional Employability and Skills	IRES partners	-	-	-
Transport		2,600.00	2,600.00	-
Sheriffhall Roundabout Upgrade	Transport Scotland	2,600.00	2,600.00	2.17%

West Edinburgh Public Transport Infrastructure	City of Edinburgh Council	-	-	-
Culture		-	-	-
Dunard Centre	IMPACT Scotland	-	-	-
Housing		5,060.00	5,060.00	
Housing Infrastructure		-	-	-
New Housing Partnership (Edinburgh Living)	City of Edinburgh Council	5,060.00	5,060.00	33.73%
Grand Total		49,004.00	49,004.00	-

4. Governance Overview



The Deal Document, signed on 7 August 2018, included a proposed Governance Framework. The summary diagram is copied below:



The document stated that the structure will be reviewed to determine its continuing relevance by the Edinburgh Joint Committee on an annual basis as part of the Annual Report.

Much of this governance structure has now been implemented:

- The **HE/FE Group, Executive Board and Directors Group** were formed prior to the Deal's signing and have continued to meet. The Executive Board and Directors' Group now meet monthly, rather than quarterly as stated in the Deal Document. The **Finance Directors' Group** has been formed and meet bi-annually.
- The **Joint Committee** was formed in November 2018, where Standing Orders were agreed. It comprises: Leaders of the six local authorities, Peter Mathieson, Principal and Vice Chancellor of the University of Edinburgh (representing all the region's Higher and Further Education Sector), and the Chair and Vice Chair of the Regional Enterprise Council (Leeann Dempster,

Chief Executive of Hibernian Football Club and Claire Pattullo, Chief Executive of the Edinburgh Social Enterprise Network). It has now met four times and has approved eight programme/project business cases and seven skills project propositions worth £704 million or 54% of the Deal.

- Recruitment for the **Regional Enterprise Council** was completed in October 2018. The group has now met three times and is focusing on shaping the emerging Regional Growth Framework and Community Benefits strategy in particular. The group has a direct link with the Joint Committee, on which its chair and vice chair sit.
- The **Integrated Employability and Skills (IRES) Board** was formed in December 2018 and has scrutinised and approved all seven of the IRES project propositions, prior to Joint Committee approval and each are now being implemented. Headline achievements and forthcoming milestones can be found on pp. 38-42
- The **Data-Driven Innovation Executive Governance Group** was formed, in anticipation of the City Region Deal approval, in May 2018, and formally sat for the first time in August 2018. It has since scrutinised and approved four DDI Business Cases (of the six that make up the DDI Programme) prior to approval by the City Region Deal Joint Committee.
- The **Transport Appraisal Board** was formed in March 2019 and has met three times. It is the Board through which Transport Scotland engages directly with the City Region Deal projects. As well as overseeing the two City Region Deal Transport projects (A720 and West Edinburgh) it considers transport elements of other City Region Deal projects, particularly in the Housing and Innovation themes. It also provides input as a region into other regional strategic projects as appropriate; such as, the National Transport Strategy and Strategic Transport Project Review 2.
- The **Regional Housing Board** was formed in April 2019 and has met three times and oversees the regional housing programme which aims to: deliver a step change in: innovation and inclusive growth in the housing and construction sectors; and in the supply of new homes across the South East of Scotland. The Board agreed that regional partners undertake a series of workshops in June 2019 to secure wider engagement and input to shape development of the regional housing work programme. Headline achievements and forthcoming milestones can be found on pp. 49-51
- Since signing the Deal, the **Programme Management Office** has been enhanced from a core team of two individuals to five, with increasing input from project leads within partner organisations as required. This has helped the PMO to manage the rising demand of servicing new Boards, to administer progress and financial reporting of approved projects, to develop a monitoring and evaluation framework, and to manage communications. The enhanced resources, and stronger collaboration and partnership working through the City Region Deal

governance structure is also helping partners to resource emerging areas of work that are strongly linked to the City Region Deal, including a new regional growth framework and a community benefits strategy.

- The **Innovation Advisory Board and Culture Board** have not yet formed, as there has been not yet been a requirement for these. Longer term, as regional collaboration continues and links and interdependencies between projects and programmes become apparent, these Boards may be formed.

5. Monitoring and Evaluation



The Deal Document commits partners to producing a quarterly Risk and Performance Monitoring Reports.

Project and programme business cases that have been approved all contain key milestones and suggestions for how programmes and projects will be monitored and evaluated. In addition, a Progress Report and Risk Register is shared regularly with Government and are standing items for consideration at all Board meetings.

From Spring 2019 City Region Deal Project Leads and the PMO have worked in collaboration to develop, for Government approval, a City Region Deal Monitoring and Evaluation Plan. This is an important document for the City Region Deal as it establishes the framework for Government to monitor activities and progress towards securing outputs and impacts. Both Governments attended key workshops and were consulted and supportive of progress to date.

The next steps are:

- **August 2019:** Agree and address outstanding issues (including finalising data requirements and selecting evaluation approaches);
- **September 2019:** Identify Monitoring and Evaluation resources and governance arrangements;
- **December 2019:** Approval by Governments and Joint Committee of Monitoring and Evaluation Plan; and,
- **January 2020:** Monitoring and Evaluation implementation.

6. The Deal – Summary of Progress



This section summarises the themes, programmes and projects within the City Region Deal. It details the progress that has been made in line with the Implementation Plan and highlights any current risks.

Quarterly performance reports are shared between the PMO and Governments throughout the year.

Research, Development and Innovation

Data-Driven Innovation (DDI)

The vision for the DDI Programme is to establish the city region as the **Data Capital of Europe** by supporting SMEs and high growth companies scale, drawing in inward investment, fuelling entrepreneurship and ensuring inclusive economic growth through five (“TRADE”) activities:

- **Talent:** to meet data skills demands in the City Region, Scotland and the UK through a range of undergraduate, post graduate and CPD programmes;
- **Research:** by expanding the city region’s leading DDI research activities to meet industry and other sectors future data needs;
- **Adoption:** through increasing the practical use and adoption of DDI by the public, private and third sectors in the city region and beyond;
- **Data:** by providing the secure data storage, analytical capacity and data accessibility to underpin all DDI Programme activities; and,
- **Entrepreneurship:** enabling city region based and other entrepreneurs to develop new DDI based businesses through support in commercialising research.

The DDI Programme consists of a Programme Office and five Innovation Hubs namely the **Bayes Centre, Easter Bush Campus, Edinburgh Futures Institute (EFI), National Robotarium and Usher Institute**. The **World Class Data Infrastructure (WCDI)** complex data and analytical services will support the operation of these hubs and delivery of the ‘TRADE’ themes above.

Headline Achievements in 2018/19

- **October 2018:** The opening of the Bayes Centre by HRH, The Princess Royal.
- **December 2018:** Government and Joint Committee approval of the Bayes Centre, National Robotarium and WCDI business cases

- **March 2019:** Government and Joint Committee approval of the Edinburgh Futures Institute business case
- Consequent build starts for all of these facilities and set up of associated TRADE activities (as detailed in the next sections of this report).

Next Milestones

Final approval of Easter Bush and Usher Institute business cases, embedding Programme monitoring and evaluation framework and range of new and enhanced hub specific TRADE projects and programmes (again highlighted in each Hub/WCDI section).

Key Risks

Risk	Mitigation
Significant cost and timing overruns in relation to programme implementation.	Built in adequate contingencies and applying good procurement practices.
Market requirements assumptions prove to be incorrect and/or new market opportunities emerge.	On-going market engagement and business development to address existing and emerging needs at both Hub and Programme levels.
Negative PR associated with City Deal expenditure.	Highlighting benefits of DDI to City Region citizens and communities in line with inclusive growth objectives and as part of overall programme communications and marketing.

Alignment with Wider Programme

The DDI Programme is aligned to the City Region Deal’s Skills and Employability theme to improve citizens’ digital skills through work with schools, colleges, employers and training providers. In the village of Newbattle, seven miles south of Edinburgh, Midlothian Council has set up the first in a series of knowledge sharing schools within the city region. As a Digital Centre of Excellence, Newbattle aims to lead the sector in the use of digital technologies to educate children and create innovative learner journeys that will equip students to thrive in the digital economy.

The project feeds into wider skills innovation through a coherent curriculum from nursery upwards based on inspiring materials delivered by teachers who are confident and competent in data education. In the spirit of the City Region Deal’s partnership approach, the project is fostering productive collaborations with other city region schools, staff and students at the University of Edinburgh, local employers and other social partners.

Bayes Centre

The Bayes Centre is the DDI Hub for Data Science and Artificial Intelligence (AI). A community of over four hundred internationally recognised scientists, PhD students, leading industry experts (from across 20 external organisational tenants) and innovation support professionals, work together across disciplines and sectors to advance data technology and apply it to real-world challenges.



Bayes Centre Building

The technical strengths brought together in Bayes build on academic excellence in the mathematical, computational, engineering, and natural sciences in the University's College of Science and Engineering. As part of the DDI Programme, the Bayes Centre is focused on supporting various industry sectors including Digital Technology, Space and Satellites and – in collaboration with the National Robotarium – Robotics and Autonomous Systems.

Headline Achievements in 2018/19

Since opening in September 2018, the Bayes Centre has delivered a range of activities and outputs. These include development of a Data Ethics MOOC (Massive Open Online Courses) in collaboration with the Data Lab, supporting the establishment of the Edinburgh Hub of the Alan Turing Institute and an expanded accelerator offering by adding an early-stage start-up/incubation programme based on the ConceptionX model to the Wayra portfolio.

Next Milestones (2019/20)

Establishing an academically mentored student internship programme around external adoption challenge projects through a “matchmaking” and delivery support service entrepreneurship pipeline and developing a “deep tech” pre-incubation academic pathfinder support strategy for academic intellectual property that requires prototyping or R&D financing to boost availability of entrepreneurship opportunities for scientists.

Key Risks

Risk	Mitigation
Market requirements assumptions prove to be incorrect and/or new market opportunities emerge.	On-going market engagement and business development to address existing and emerging needs at both Hub and Programme levels.
Existing process and systems insufficient to respond to City Deal demands (e.g. recruitment).	Programme structure and processes in place to address.
Negative public and government perception towards automation, productivity and the future of work.	Develop communications strategy in line with and as part of overall CRD Programme communications and marketing.

Case study: Support for business start-ups

The Bayes Centre is home to a business accelerator partnership which picks up to ten new companies for a six-month programme of mentoring in technical and commercial know-how to help their businesses take off. Working together to support these new companies and promote Scotland's credentials in tech investment are the University of Edinburgh, Scottish Enterprise, and Wayra UK - run by global telecoms giant Telefonica. The three partners provide a gateway to world-class academic expertise to allow young companies to develop and communicate their core product or service to a range of business audiences including investors.

World Class Data Infrastructure (WCDI)

Achieving the aims of the DDI programme requires a powerful, high-capacity and flexible data infrastructure capable of responsive and secure delivery of an expanding range of complex and bespoke data and analytical services. These activities also demand a level of service (e.g. resiliency to the loss of power, redundancy of equipment to mitigate the impact of sudden failures) that is not normally required for research computing applications and is not currently supported by existing facilities.



WCDI Computer Racks

The WCDI consequently consists of four complementary components:

- **WCDI computer room** – a new high resiliency computer room at the Edinburgh Parallel Computer Centre’s Advanced Computing Facility to complement the other three computer rooms that are focussed on supercomputing system provision for research users;
- **Data and software infrastructure** – the underlying private cloud computing and data infrastructure to support the DDI programme. As part of this component, both Open Source and paid-for advanced data analytics and other software infrastructure will be delivered;
- **Internet of Things (IoT) infrastructure** – a regional IoT network for the City Region will be created. This part of the WCDI hub is the responsibility of the University’s Information Services Group; and
- **Regional Data Haven** – a regional data haven for local public data, sourced initially from City Region Deal partners, will be created to support a smart public data generation infrastructure.

Headline Achievements in 2018/19	Next Milestones 2019/20
Dec 18: Completion and approval of the WCDI Business Case by Government and Joint Committee procurement on-going.	Work with the contractor to deliver the new Computer Room 4 building and install a new ACF Data Centre network / fabric to underpin the WCDI with a world leading data network.
Ongoing: Procurement and commitments to maximise community benefits for City Region Deal partners	Work closely with City Region Deal Local Authorities to develop a regional data haven plan and prepare for the next phase of development of the IoT Service to enable expansion of the LoRaWAN IoT network beyond the City of Edinburgh.

Case study: Internet of Things network

A key component of the WCDI [Internet of Things](#) (IoT) service will be a regional sensor network. An early case study of how this can be used is provided by [the ParkLife Project](#). This project is a collaboration between the University of Edinburgh and the City of Edinburgh Council. It is funded by Nesta through a grant from the Big Lottery Fund and the Heritage Lottery Fund. The aim of the ParkLife project is to understand how people use and value Edinburgh's parks. The goal of the project is to produce an open source toolkit which will enable park managers, stakeholders and users to collect, analyse, interpret and share data that will support engagement with parks and their long-term sustainable development.



The Meadows, Edinburgh

National Robotarium

The National Robotarium will be co-located on the Heriot-Watt University campus, having access to the resources of both Heriot-Watt and the University of Edinburgh. It will meet existing and future industrial need by accelerating the generation of knowledge and flow of technologies into the economy through targeted research, industry collaboration, living laboratories, and demonstrator and incubation facilities. The National Robotarium will provide state of the art facilities to co-locate researchers, engineers, entrepreneurs and educators to deliver the UK's leading international centre for the generation of new smart robotics companies.



National Robotarium Building (Artist's Impression)

The activities proposed build on the established partnership with University of Edinburgh through the Edinburgh Centre for Robotics.

Headline Achievements in 2018/19	Next Milestones 2019/20
Jan 19: Internal Governance agreed and in place	Appointment of National Robotarium leadership team
Feb 19: Architect-led Stakeholder Workshops	Formation of International Advisory Board
Mar 19: Finalised Architect Brief	Technical Design signed off by Project Executive Board
Jul 19: Appointment of Project Design team complete	Focussed Industry Engagement

Key Risks

Risk	Mitigation
Recruitment and retention of UK and international academic leaders to deliver objectives set out in business case.	Heads of Schools will produce and own plan. Project Team have been empowered to drive plan as part of TRADE themes. Recruitment plans and targets monitored and reported to the University Executive. Senior management commitment to provide a stimulating and supportive working environment that allows individuals to achieve their career aspirations
The project outcomes do not integrate with University's operational processes and ways of working.	The correct stakeholders have been identified for the Project Board to represent Schools and Services. The Board includes Heads of School and Deputy Principals.

Alignment with wider programme

The development of the National Robotarium is aligned with the strategic focus of both Universities and with the Data-driven innovation theme. The core strategic focus of Heriot-Watt University is:

Strengthen research intensity in fields of economic and societal benefit; Provide truly global education while maintaining our Scottish roots; and Deliver excellent student experience and highly employable graduates.

Robotics and Autonomous Systems are transforming industry and our personal lives worldwide. This cuts across all aspects of life from Healthcare to Construction, Financial Services to Agriculture. As part of the business plan we will study the industry landscape and identify areas of focus.

Edinburgh Futures Institute (EFI)

The EFI will deliver multi-disciplinary, challenge-based DDI research and teaching through thought-leadership in cultural, ethical, managerial, political, social and technological DDI issues to transform the application, governance and benefits delivered from the use of data. It will do this by bringing together a range of academic disciplines, with external partners across financial services, cultural industries and the public sector.



Edinburgh Futures Institute (Artist's Impression)

Across all of the above there will be a particular emphasis on the ethical implications of big data analytics and machine learning, as well as the critical infrastructure needed to drive social, economic and cultural inclusion as defined within the five inclusive growth objectives of the City Region Deal.

Headline Achievements in 2018/19	Next Milestones 2019/20
Mar 19: Completion and approval of the Institute Business Case by Government and Joint Committee.	Running the first flagship postgraduate programme on Finance, Technology and Policy.
Jun 19: Foundation of a Baillie Gifford Chair of Ethics of Data and Artificial Intelligence.	Recruitment of business development and adoption teams.
	Piloting of entrepreneurship programmes.

Key Risks

Risk	Mitigation
Significant cost and timing overruns in relation to programme implementation.	Build in adequate contingencies and apply good procurement practices.
EFI market requirements assumptions prove to be incorrect and/or new market opportunities emerge.	On-going market engagement and business development to address existing and emerging needs.
Negative PR associated with City Deal expenditure.	Highlighting benefits of EFI to city region citizens and communities in line with inclusive growth objectives and as part of overall programme communications and marketing.

Case Study: Reducing fuel poverty

Castlerock Edinvar, Cairn and Scottish Borders Housing Associations are working with Dr Kate Carter, Senior Lecturer in Architecture, Technology and Environment, on using digital data to reduce fuel poverty in social housing. The challenge of identifying and helping those tenants who cannot afford to heat their own homes lies in bringing together complex and fragmented datasets from a range of sources. Collaboration between Architecture and Design Informatics and the three housing associations may be the key to a new, more holistic and joined up approach in tackling this pressing social issue.

Usher Institute

The Usher Institute vision is to create a world-leading innovation hub where public, private and third sectors collaborate to enable data-driven advances in the delivery of health and social care.

This will be facilitated by the co-location of the Usher Institute’s academics and researchers with partner organisations from the public, private and third sectors, in a purpose-built Institute that will encourage interdisciplinary collaboration, transformative research, education, knowledge exchange and innovation.

Health and social care innovation at scale will be delivered by integrating the activities of clinicians, life scientists and data scientists to identify new, co-produced insights in key challenge areas. These will be passed on to health and social care providers to improve products and services, ultimately enhancing the health and wellbeing of patients. The programme will be underpinned by a comprehensive data storage repository (DataLoch) hosted by the World Class Data Infrastructure (WCDI) that will securely link all data assets from primary, secondary and social care, and can be interrogated by accredited researchers for any acute or chronic condition, care pathway or service.

The Institute will draw on Scotland’s mature and world-leading health data assets and well-established National Health Service and Scottish Government governance and data-sharing protocols.



Usher Institute Building (Artist’s Impression)

Headline Achievements in 2018/19	Next Milestones
<p>Jun 19: Completion and submission for assessment (by Governments and the CRD Joint Committee) of the Institute Outline Business Case</p>	<p>Complete work on the design and development of the building including moving through RIBA Stage 3 and obtaining planning and building warrant approval</p>
	<p>Development and embedding of a data skills in modern (bio-medical) apprenticeships.</p>
	<p>Alpha stage deployment of the DataLoch programme.</p>
	<p>The development of data science capability in the MBChB undergraduate medicine programme.</p>
	<p>Accelerator programme to support start-ups.</p>

Key Risks

Risk	Mitigation
Significant cost and timing overruns in relation to programme implementation.	Built in adequate contingencies and applying good procurement practices.
NHS and Local Authority data providers cease to partner with Usher Institute.	Ensure integrity of personal data use and ensure delivery of high value outputs.
Major data loss from Usher.	Ensure adequate security precautions and limit damage via data encryption.

Case Study: Helping patients with heart disease

Specialists at the Usher Institute have harnessed data to develop a new approach to heart disease treatment with the potential to cut hospital admissions and deliver major benefits for patients and the healthcare service. With the help of Abbott Diagnostics routinely collected data from across the region were linked to assess a new method for diagnosis and risk assessment of patients in A&E suspected of heart attacks. Researchers showed that introducing new tests into routine practice allowed better targeted treatments and improved survival rates.

This led to the break-through finding that previous blood tests were under-diagnosing heart attacks in women contributing to inequalities in treatment. With the help of linked datasets these changes have cut the hospital stay of patients coming to A&E with chest pain by a third. Beyond the city region, the research has changed how heart attacks are diagnosed, and influenced national and international guidelines.

Easter Bush

An efficient agriculture sector is critical to social wellbeing: by 2050 world agricultural production will need to increase by 50% to feed a growing global population. By applying data technologies, that enable farmers and related industries to improve food production, digital agriculture (Agritech) will be critical to meeting this need.



Easter Bush Campus

The current project proposals aim to leverage the existing world-class research institutes and commercialisation facilities at Easter Bush to become a global location of Agritech excellence. To achieve this Easter Bush will work with the Bayes, EFI, Usher and WCDI hubs within the DDI programme, along with InnovateUK, Innovation Centres AgriEpi and CIEL, commercial partners, food processors, retailers and consumers.

Through innovation in data acquisition (learning from Usher Institute), storage (WCDI), analysis and interpretation – including the application of AI (with the Bayes Centre) and accessible digital delivery (with EFI) to multiple and diverse stakeholder communities - Easter Bush will provide leadership towards a sustainable food supply chain.

The resultant development on campus wide is contingent on new and improved transport infrastructure, specifically the: A701 relief road, A702 link road, improvement of the A702/Bush Loan junction and new measures to promote **and facilitate active travel**.

Headline Achievements in 2018/19	Next Milestones 2019/20
<p>Jan 19: Completion of ground investigation survey of route of new A701 relief road and A702 link road.</p>	<p>Finalisation and submission for approval of Easter Bush Campus Outline Business Case (including preferred option for improvement of A702/Bush Loan junction and proposals for the creation of an active travel corridor with priority for pedestrians, cyclists, and public transport).</p>
	<p>Move ahead with projects to transfer DDI knowledge in Agritech (for example, the Centre for Animal and Plant Breeding and engagement with farmers through expansion of the Cool Farm Tool).</p>
	<p>Completion of option appraisal for improvement of A702/Bush Loan junction.</p>
	<p>Issue of civils management contract for the A701 relief road and A702 link road.</p>

	Completion of proposals for the creation of an active travel corridor (priority for pedestrians, cyclists, and public transport).
--	---

Key Risks

Risk	Mitigation
Significant cost and timing overruns in relation to programme implementation.	Build-in adequate contingencies and apply good procurement practices.
Major data loss from Easter Bush.	Ensure adequate security precautions and limit damage via data encryption.
Delay in implementing the essential transport infrastructure.	Midlothian Council taking the lead in commissioning work to ensure good progress through the survey, design and construction processes.

Alignment with Wider Programme

The Easter Bush Science Outreach Centre (EBSOC) is a purpose-built laboratory and the first of its kind in Scotland. The Centre delivers high quality science experiences for school pupils, teachers and community groups with a widening participation focus on reaching and engaging hard-to-reach audiences. All



School pupils at Easter Bush Science Outreach Centre

workshops/experiences are hands on and linked to the SQA Curriculum for Excellence (and include basic DDI skills training) with ongoing consultations with primary and secondary schools and strong relationships and partnerships with the education teams of local Councils. Since it opened, in January 2018, 3000 people have taken part in an EBSOC school workshop or community outreach events. The aim is – through working with all City Regional Deal partners - to increase participation in 2019/20 across the city region area.

In addition, the provision of the essential transport infrastructure directly removes a physical barrier to major Data-Driven Innovation development at Easter Bush, thereby facilitating economic growth within the region.

Edinburgh Innovation Park (Food and Drink Innovation Campus)

The Food and Drink Innovation Campus, known as Edinburgh Innovation Park (EIP) will be located next to Queen Margaret University, in Craighall, by Musselburgh, East Lothian

The EIP will deliver, as Phase 1, a flexible 7,200 m² GIA Innovation Hub for the food and drink sector in Scotland. The hub will build on the University's existing expertise including Dietetics, Nutrition and Biological Sciences. The Innovation Hub will be the catalyst for subsequent phases of the wider EIP.



Indicative design of Innovation Hub/EIP

This state-of-the-art Innovation Hub will drive company growth, supporting and developing existing businesses and creating sustainable new businesses to access a global market for healthy and functional food. The development will allow the Queen Margaret University, along with businesses, to form and grow a business sector that will harness the potential of translational medicine in food and drink. This will in turn support the diversification of the food and drink industry towards preventative, therapeutic and rehabilitative applications of expertise in genomics. The Innovation Hub will be the catalyst for subsequent phases of the wider EIP. It will provide resources for national and global players and provide access to expertise to develop new opportunities and solutions that will drive company growth.

The EIP is also part of a significant development of land adjacent to the Queen Margaret University campus which encompasses a new grade separated junction, 1,500 homes, a new primary school and community facilities. A commercial zone will also be created within the existing Queen Margaret University campus that will support the evolution of the community and the newly developed businesses

Key Risks

Headline Achievements in 2018/19	Next Milestones
Jun 18: Appointed the Project Lead Officer: Mar 19: Complete the land assembly for the Junction:	Jul 19: S75 for the planning permission in principle concluded/ procure external expertise for further progression of the Full Business Case
	Jul 19: S75 for the planning permission in principle concluded/ procure external expertise for further progression of the Full Business Case
Mar 19: Planning permission in principle approved:	Aug 19: Planning permission in principle issued for the whole development
Apr 19: Detailed design for the proposed grade separated Junction agreed:	Oct 19: Planning permission issued for the Grade Separated Junction to improve access
May 19: Planning permission for the Junction submitted and validated:	Feb 20: Commencement of construction of Grade Separated Junction
	Jun 20: Approval of full business case by Joint Committee.

- Increase in the cost of project at (1) design stage, (2) contractor tendering stage, (3) during, construction of the Junction, Innovation Hub and the EIP.
- Operating costs of the Innovation Hub are higher than forecast, resulting in financial loss.
- Failure to deliver the operational business plan resulting in unoccupied business space within the Innovation Hub.

Alignment with wider programme

- The Innovation Hub forms a key part of an ecosystem of Innovation themed projects promoted by the Edinburgh South East Scotland City Region Deal aimed at delivering inclusive growth across the region.
- The project will contribute to job density improvement for the city region and create new jobs for graduates/local people by making available infrastructure/construction opportunities and employment opportunities within the Innovation Hub and the EIP.
- The Innovation Hub will generate job opportunities through the innovation led growth of the businesses located there, and through providing access to the space, facilities and services for food and drink start-up companies/SME's and local businesses.
- Ongoing collaboration and partnership working between East Lothian Council and Queen Margaret University.
- The project will facilitate the harnessing of community benefits through the procurement

Case Study: Fodilicious

Lauren Leisk graduated from QMU in 2016 with a BA Hons (1st Class) Business Management. At the age of 20, Lauren discovered that she had irritable bowel syndrome (IBS). She struggled to find readily available food products that were suitable for her diet and discovered a gap in the market. In September 2017, Lauren set up Fodilicious, an innovative and UK exclusive food manufacturing business providing convenient, healthy meal options following the low FODMAP diet, (IBS-friendly) helping IBS sufferers to live a better-quality lifestyle. Their products are also gluten-free and dairy-free too, effectively positioning Fodilicious in the fast growing 'free from' food market. The company has grown very quickly and is now selling through their website directly to consumers and to several food service and hospitality clients. They have outsourced production and of both their meals and snack product and are in discussions with major retailers.

Lauren engaged with the Scottish Centre for Food Development and Innovation team from QMU's Scottish Centre for Food Development and Innovation (SCFDI) who helped her to develop and launch new range of Cookie Buttons, the UK's first FODMAP friendly certified snack product.

Lauren also joined QMU's Business Innovation Zone in 2017 where she has access to desk space and business support from the on-campus Business Gateway service and the Universities Research and Knowledge Exchange Development Unit.

Fife Industrial Investment Innovation

The Fife Industrial Innovation Investment Programme (Fi3P) is a £49.4 million, ten-year programme delivered by Fife Council. The investment will deliver new business premises and immediately available serviced land. The new business accommodation will be located within existing business clusters in mid and south Fife, adjacent to growth corridors (M90 and A92). It will facilitate more joint working between the region’s universities and Fife businesses, drive productivity and deliver higher value, skilled, permanent jobs from data driven innovation. The new industrial and commercial stock will ensure that Fife’s industrial estates provide flexible space for innovative manufacturing industries with cutting-edge digital and energy capabilities. Four sites will be developed in Glenrothes, Kirkcaldy, Lochgelly and Dunfermline over the next three years. Seven hectares of new serviced employment land will be available for private sector investment.



*New units Flemington, Glenrothes
(Artist's impression)*

Headline Achievements in 2018/19	Next Milestones
Mar 19: Full Business Case agreed by Edinburgh and South East of Scotland City Region Joint Committee	Q3 19/20: Planning Approval for Fife Interchange, Dunfermline.
Jun 19: Planning Approval Flemington, Glenrothes	Q3/4 19/20: Tenders awarded for sites at Fife Interchange, Dunfermline and Flemington, Glenrothes.
	Mar 2020: Construction underway at Fife Interchange, Dunfermline and Flemington, Glenrothes
	Q4 19/20: Planning approvals for sites in Kirkcaldy and Lochgelly

Key Risks

- Programme underspend due to delay with site acquisitions and /or servicing.
- Cost increases due to higher construction inflation than assumed in the Business Case, with consequent reduction in outputs.
- Changes in the wider policy environment that impact on the delivery requirements of the programme (planning, building control, environment, etc) and increase costs.

Alignment with Wider Programme

The Fife Industrial Innovation Investment Programme will:

- Provide important investment in progressive industrial modernisation that will encourage more businesses to grow and locate within Fife.
- Support the creation/safeguarding of 1,000 skilled permanent jobs, with almost 600 short-term construction jobs.
- Attract up to £30m of further investment by the private sector.
- Facilitate the adoption of data driven innovation by Fife based organisations and wider partnership working with City Deal partners including Scottish Borders Council and the Universities.
- Contribute to a regional step-change in economic performance by balancing growth across the region – targeting areas where much-needed investment will create new jobs.

Central Borders Innovation Park

The Central Borders Innovation Park, situated next to the Borders Railway terminus at Tweedbank, will deliver much-needed high quality business space to the Scottish Borders. Costing £29 million, the programme will stimulate business growth and associated job creation. It will enhance the area’s inward investment offer, particularly to high-value sectors, as well as assisting existing businesses to improve their competitiveness. It will also help to address inequalities in the area through providing access to better quality, higher paid jobs.



Artist's Impression of Central Borders Innovation Park

Headline Achievements in 2018/19	Next Milestones
Jun 18: Council approval of Outline Business Case	2019/20: Phase 1 construction
Jan 19: Council approval of Full Business Case:	
Mar 19: Full Business Case approved by Joint Committee and Scottish Government:	

Key Risks

- Failure to ensure the programme has the appropriate level of funding.
- Individual projects go over budget.
- Marketing fails to attract inward investment.

Alignment with Wider Programme

Scottish Borders Council is working with strategic partners, particularly Fife Council and the University of Edinburgh, to maximise the benefits of data-driven innovation and its potential to increase the number of innovation-active businesses, both regionally and locally. As a participant in the City Region Deal Housing, Construction and Infrastructure (HCI) Skills Gateway, the Council will look to develop new talent through utilising the construction opportunities during the build phases of the innovation park.

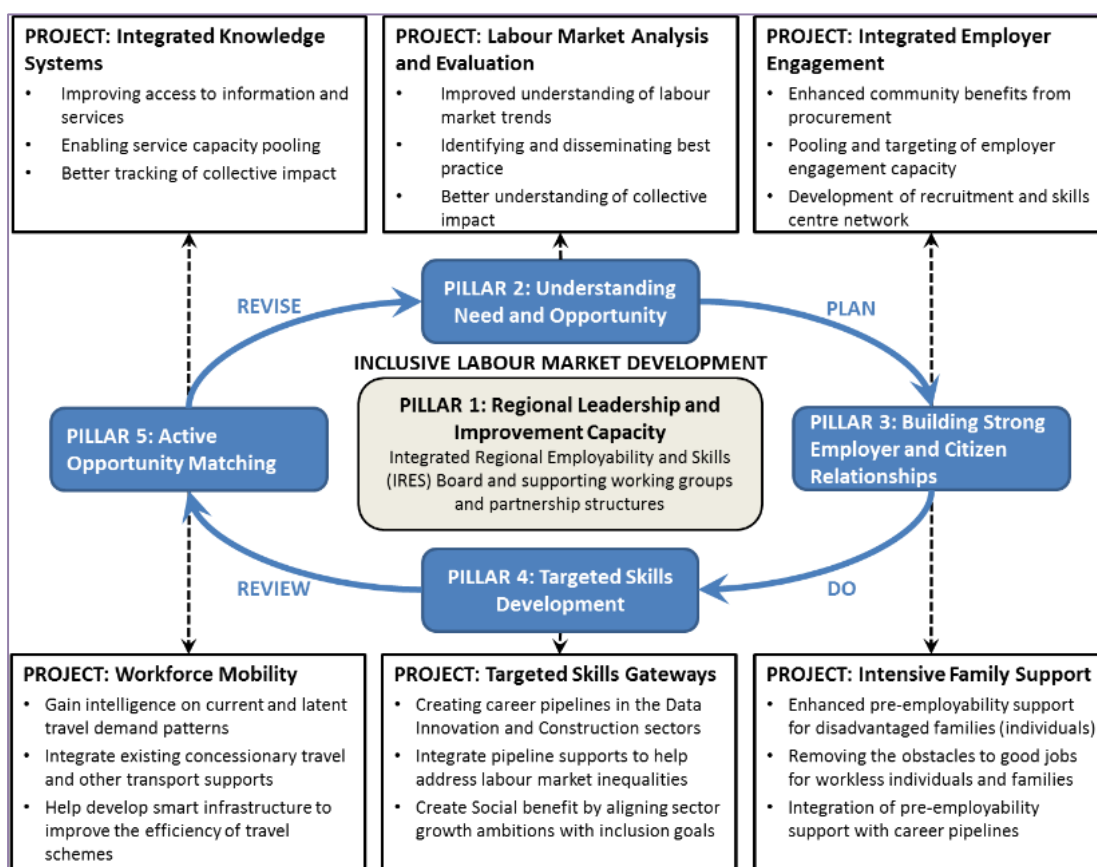
Integrated Regional Employability and Skills

The Integrated Regional Employability and Skills (IRES) Programme and its underpinning cross-sector partnership seeks to evolve regional labour market policy and practice to help drive Inclusive Growth. It aims are to:

- Increase the visibility of opportunities and put in place tailored support to help citizens flourish with a focus on; people with a disability, the workless or working poor, disadvantaged young people, minority ethnic communities, and gender imbalances
- Open-up new and diverse talent pools to business that help minimise skills gaps and promote an inclusive approach to recruitment and workforce development
- Evolve, streamline, and integrate the region’s employability and skills system to enhance our capacity and capability to drive inclusive growth and create added value for stakeholders.

The programme focuses on five improvement pillars with seven initial projects targeting known areas of weakness or opportunity. These activities and the £25 million (over 8 years) change fund available to the partnership will deliver an additional 14,700 skill improvements and 5,300 people into employment.

Summary of IRES Programme



Headline Achievements in 2018/19

Phase 1: Establish	Phase 2: Programme Delivery (on-going)
<ul style="list-style-type: none"> • Ratify IRES Board's remit and membership and then establish the Board along with any supporting structures and processes: Complete Nov 18. • (IRES Board first met in Dec 18 and initially met monthly. Since June 19 meets in a quarterly programme and project oversight development cycle.) • Finalise the IRES Programme Business Case with Government, ratify with IRES Board, and approved by Joint Committee: Complete Dec 18. • All seven proposed IRES projects developed in detail and approved by Joint Committee (Mar and Jun 19). • Back to back grant agreements now being finalised. 	<ul style="list-style-type: none"> • IRES Board quarterly progress and annual review process linked to wider City Region Deal M&E framework established to track progress. • Soft launch events for Skills Gateways: • Data Town: complete June 19, • Building Success through Diversity and Inclusion: complete July 19. • Project delivery structures put in place and recruitment processes initiated. • Tourism sector skills research completed July 19 to inform developments. • IRES Board reflection day planned for Nov 19 to inform next stage programme development. • Advisory Boards being established for major projects to ensure expert input and strategic direction.

Next Milestones: Phase 2 Programme Delivery

<p>Programme</p> <ul style="list-style-type: none"> • Review intelligence from programme activity and labour market research to identify progress against targets, changes to funded activity, next step projects, service adjustments, or other changes. • Raise awareness of IRES ambitions and strengthen the linkages and integration with "Business as Usual". 	
<p>Integrated Knowledge Systems</p> <ul style="list-style-type: none"> • Test the suitability of the new SDS Data Hub in supporting multi-partner client journey tracking ambitions and agree the scope of big data and visualisation pilot project. 	<p>Integrated Employer Engagement</p> <ul style="list-style-type: none"> • Virtual regional delivery team in place to oversee developments for regional common employer offer, community benefits from procurement and social benefit.
<p>Labour Market Analysis and Evaluation</p>	<p>Intensive Family Support</p>

<ul style="list-style-type: none"> Planned workshop session Autumn 19 to establish a virtual team to plan, implement, and refine the labour market analysis and evaluation activities of the partnership <p>DDI and HCI Skills Gateways</p> <ul style="list-style-type: none"> Pilot activities commenced including HCI inclusive Advanced Skills MSc and FE accelerated into-work (e.g. bricklaying for housebuilding) pilots. Shared equalities and inclusion post for Skills Gateways (in partnership with EQUATE) in place. 	<ul style="list-style-type: none"> Agree ESF match funding for regional IFS activity Pilot regional IFS activity co-produced, specified, commissioned and delivering activity, with ESF funding secured. <p>Workforce Mobility</p> <ul style="list-style-type: none"> Project team recruited and pilot projects agreed and progressing to implementation.
---	---

Key Risks

Key Risks	Mitigations
<ul style="list-style-type: none"> Programme fit, cohesion, and impact The programme does not secure sufficient stakeholder buy-in and control to ensure an integrated set of interventions and satisfactory progress towards long term inclusive growth and system change (value for money) goals. 	<ul style="list-style-type: none"> Robust programme management structures in place including Joint Committee and Executive Board providing strong senior level leadership and support of programme goals. Early establishment of an empowered IRES Board with strategic oversight and links to Scottish Government Cities team overseeing developments. Project working groups established to drive development and mainstreaming informed by improved labour market analysis, quarterly, annual and mid-programme evaluations.
<ul style="list-style-type: none"> Performance and good practice learning. IRES is expected to deliver significant inclusive growth impacts across the whole City Region however detailed monitoring frameworks are still being developed. 	<ul style="list-style-type: none"> City Region Deal PMO to develop the IRES programme as a rolling programme with additional detail on activity developed as required to ensure satisfactory progress against outcomes and measure to ensure value for money. IRES Partnership structures and engagement communication activity will support, capture and disseminate information for mainstreaming learning.
<ul style="list-style-type: none"> Disadvantaged citizens and low-income families Disadvantaged citizens and families do not see tangible long-term benefits from the programme. 	<ul style="list-style-type: none"> Work with the Scottish Government Cities team on developing and implementing the Inclusive Growth Framework to ensure project propositions and implementation plans detail how delivery targets will be assured.

	<ul style="list-style-type: none"> The Intensive Family Support Service and Workforce Mobility projects prioritize vulnerability and connect into the opportunities being made available in the region.
<ul style="list-style-type: none"> Availability of public finance Potential loss of ESF funding arising from Brexit and restraints in public sector funding eroding capacity of partners to fund essential services. 	<ul style="list-style-type: none"> Work with the partners to quantify the potential risk and seek strategies to minimize this, accepting there will be no recourse to additional CR funding to plug such gaps. The costs of the projects will be delivered within the agreed cash envelope with opportunities to lever additional resources being exploited.
<ul style="list-style-type: none"> Private sector investment and support for inclusion cannot be achieved 	<ul style="list-style-type: none"> Stakeholder Engagement Strategy being developed in parallel with the Business Case ensuring alignment with potential investors.

Alignment with wider programme

The IRES Programme will incrementally strengthen and streamline regional delivery to achieve better outcomes for all the region. It is aimed at supporting those people facing significant disadvantages to securing and sustaining meaningful, high quality employment- delivering better impact from existing public, private and third sector investments.

Links have already been developed between City Region Deal theme structures to identify and collaborate on boundary issues. This includes joint working with DDI Delivery Board and Housing Board on the two “Targeted Skills Gateway Projects” and the Transport Board on the “Workforce Mobility.

Case Study 1: Data Town

The Data Education in Schools project held three 'Data Town' events in May / June 2019 which brought together young people from across the City to consider what a 'Data Town' of the future might be like.

The purpose of the day was to take learners through a series of events in an imagined 'Data Town' to explore how data can play a part in our lives and in that of our communities. The event was part of the first phase of the Data Education in Schools project aiming to support the development of a data curriculum across primary and secondary schools in the city region.

The workshops ran in three locations: Waid Academy, Anstruther, Fife; Kelso High School, Scottish Borders, and the University of Edinburgh Pollock Halls. Over 150 primary and secondary-aged pupils from twenty schools across the city region attended the workshops.

The 'Data Town' event at the University on 3 June was also the launch event for the DDI Skills Gateway. The young people had the opportunity to see the way that data-driven innovation is being used to support medical education and to research the use of robotics for elderly care.



School children at the Data Town Event

Case Study 2: Building Success Through Diversity and Inclusion: Women in Engineering, Construction and Property – June 2019

As industry and public sector and proactively encourage women’s career pathways, this City Region Deal event, run in partnership with Hays recruitment, Equate Scotland and Edinburgh Napier University, brought together industry professionals, key stakeholders and ambassadors who are committed to help achieve these aims.

120 individuals from industry, public sector and education registered for event. Speakers included Scottish Government Cabinet Secretary for Communities and Local Government Aileen Campbell and key industry and equality and diversity champions.



Delegates at the Diversity and Inclusion event

Transport

West Edinburgh

West Edinburgh is recognised by the Scottish Government as a key national economic asset and perhaps the most important gateway to Scotland. [National Planning Policy](#) (NFP3) sets the long-term vision for development and investment across Scotland and cites West Edinburgh as a significant business investment location with potential to be internationally competitive. In recognition of its key gateway function Edinburgh Airport and adjoining land is identified as a national development.

The vision for West Edinburgh, in NPF3 can only be delivered through the investment in a strategic package of transportation improvements. These improvements include a core package of A8/A89 sustainable transportation measures that provide long term resilience and support strong connectivity between neighbouring authorities. Most importantly this will help enable the supply of labour from the surrounding area to meet the growing labour market demand required to realise the full potential for West Edinburgh.

The Scottish Government has committed £20 million for investment to support public transport infrastructure improvements identified by the [West Edinburgh Transport Appraisal](#) (WETA), and the City of Edinburgh Council has committed £16 million. Partners recognise that the WETA package currently amounts to £108 million of infrastructure. The scope of WETA will therefore be prioritised in line with this funding, and in consideration of how much funding can be secured by the private sector and developer contributions.

Headline Achievements in 2018/19	Next Milestones
Summer 19: Project Delivery Plan completed. This includes a phasing strategy, high level programme, project level governance and reporting structures.	Dec 19: Procurement of Design and Delivery consultants.
Summer 19: City Region Deal funded projects within West Edinburgh were prioritised; through the further development of the WETA cost attribution model,	Jun 20: Ongoing development of individual Project Business Cases complete.
	2021: Detailed design of projects, site investigations, attainment of necessary statutory powers in order to implement improvements:
	TBC: Procurement of Contractors
	TBC: Construction of Transport Improvement Projects

Key Risks

- Failure to secure sufficient funding to carry out all transport improvements identified in the WETA.
- Difficulties in prioritising transport interventions within WETA.
- Programme underspend due to delays in consultancy work or securing funding.
- Cost increases in construction due to external economic factors.

Alignment with wider programme

This project will eventually be procured as a construction project, and links with the Housing and Construction Infrastructure Skills Gateway will be established. The improvement of public transport provision in this area has the potential to unlock housing development opportunities and ease congestion in the corridor between West Lothian and Edinburgh City Centre.

A720 (Sheriffhall)

The Sheriffhall Roundabout is currently the only junction on the A720 Edinburgh City Bypass that is not grade separated, which means the City Bypass is at the same level as the A7 and A6106 local approach roads. This at-grade, six-way junction, often experiences significant queuing, especially during peak hours. The Scottish Government’s commitment through the Edinburgh and South East Scotland City Region Deal includes up to £120 million to support improvements to the A720 Edinburgh City Bypass for the grade separation of Sheriffhall Roundabout. The project is being delivered by Transport Scotland and is subject to Transport Scotland’s normal governance procedures.



Sheiffhall Roundabout

Headline Achievements in 2018/19	Next Milestones
<p>May 2018: Completion of detailed Ground Investigation works.</p>	<p>Later in 2019: Completion of the development and detailed assessment of the preferred option with a view to publishing draft Orders for formal comment.</p> <p>Progress on the delivery of the scheme itself can only commence when the scheme is approved under the statutory procedures and thereafter a timetable for construction can be determined.</p>
<p>Throughout 2018/19: Significant progress with development and detailed assessment of the preferred option through the Design Manual for Roads and Bridges (DMRB) Stage 3 Assessment.</p>	
<p>Throughout 2018/19: Stakeholder workshops. Extensive consultation with active travel stakeholders regarding provision for non-motorised users, including cyclists in scheme proposals.</p>	

Key Risk

- The nature and extent of historical mine workings and/or complex ground conditions prove more onerous than identified through extensive detailed ground investigation works and adversely impact delivery programme and/or scheme cost.

Alignment with wider programme

- Support future development in the region, including the South East Wedge development.
- Contribute towards the requirement to provide Community Benefits, in line with the requirements of the Procurement Reform (Scotland) Act 2014.
- Support wider skills development in the construction sector.

Culture

Dunard Centre

Dunard Centre, supported by Royal Bank of Scotland, will be a new music venue located in the heart of Edinburgh. It will sit just off St Andrew Square, behind and linked to the Bank's historic head office, Dundas House. The project is led by a charitable organisation, IMPACT Scotland, and is supported by Dunard Fund, a long-term funder of the arts and music in Scotland.



Dunard Centre, St Andrew Square (Artist's Impression)

Dunard Centre will be Edinburgh's first purpose-built music venue in 100 years and will offer world class acoustics in a 1,000-seat auditorium, together with a 200-seat studio for performance, rehearsal and recording. A range of rooms and spaces will enable substantial community outreach and education and provide for conferences. The site will be enhanced by an open foyer with café/bar facilities and opportunities for all-day music and performance. It will be the new home for the Scottish Chamber Orchestra, the only Edinburgh-based National Performing Arts Company, and a principal venue for the Edinburgh International Festival. It will make a significant contribution to the ongoing success of Edinburgh's cultural and festival offerings.

Headline Achievements in 2018/19	Next Milestones
Dec 18: City Region Deal Joint Committee Approval of Business Case	Q4 19/Q1 20 Existing building at rear of Dundas House demolished.
Apr 19: Planning permission granted by The City of Edinburgh Council	Q1 20: Completion of pre-construction services agreement with preferred contractor and receipt of tenders from principal sub-contractors.
Apr 19: Official naming - Dunard Centre, supported by Royal Bank of Scotland	Mid 20: Commencement of construction of Dunard Centre.

Key Risks

- Potential judicial review of planning approval could cause indeterminate delay.
- Capital project risks.
- Continued site access opposition from neighbouring developers – potential to frustrate planned construction timetable.

Alignment with wider programme

Through a significant period of construction, the project will add to the Deal-wide growth in employment opportunities, including the targeting of inclusive employment practices.

On completion and operation, Dunard Centre will contribute to the economic growth of the region and help protect the £300 million plus generated by the Edinburgh festivals.

As an all-day, purpose-built venue, in an accessible location, Dunard Centre will provide a range of social benefits for the community. By working with partners, the venue will provide a focal point to develop new audiences, increase participation through outreach programmes and act as a springboard for community outreach work across Edinburgh and the wider region. A wide range of programmes will inspire young people and help target groups under-represented as participants and audiences, supporting the cultural sector to build audiences which accurately reflect the diverse nature of society.

Regional Housing Programme

The regional housing programme aims deliver a step change in innovation and inclusive growth in the housing and construction sectors; and deliver a step change in the supply of new homes across the South East of Scotland.

Headline Achievements in 2018/19

In December 2018, The City of Edinburgh Council, National Galleries of Scotland, National Museums of Scotland, Edinburgh College, Scottish Government and Scottish Futures Trust signed a [joint agreement](#) to work together

to create a new vibrant, city quarter in Granton Waterfront, a key part of one of the seven strategic sites.

In January 2019, Winchburgh, one of the seven strategic sites, secured a [tripartite agreement](#) (West Lothian Council, Scottish Government and developer) to enable the delivery of nearly 3,500 homes.

In January 2019, Edinburgh Living, a new housing company (City of Edinburgh Council and Scottish Futures Trust) established as part of the Deal, delivered its [first wave](#) of new homes with around 1,500 new affordable homes to be delivered through the initiative over the next five years.

In March 2019, the Joint Committee approved the establishment of a Regional Housing Board with membership from the six local authority partners; Scottish Government; Scottish Enterprise; Scottish Futures Trust; Edinburgh Napier University; and the Regional Enterprise Council.

- To drive forward the work programme four key workstreams have been identified by the board:
 - Affordable housing
 - Innovation and skills
 - Strategic sites
 - Infrastructure and land
- In June 2019, regional partners ran a series of workshops with over 60 key stakeholders to explore high level opportunities and constraints and to activate further collaborative working. This feedback has been used to develop an outline regional housing work programme.
- In September, a report will be considered by the Joint Committee which outlines an ambitious regional housing work programme shaped by local, regional and national partners with input from key stakeholders.



3,450 homes at Winchburgh unlocked agreement between West Lothian Council, Scottish Government and West Coast Capital.

Next Milestones

Key areas to be progressed in the year ahead under each of the four key workstreams are outlined below:

Affordable housing

- Partners will work to develop a 20-year regional housing delivery plan in collaboration with Scottish Government to align to their ongoing work on the 2040 vision for housing in Scotland.
- Explore opportunities for new partnerships and joint ventures with public sector partners to develop sites and deliver a range of outcomes, including affordable housing.
- Consider development of new investment and delivery models to unlock private and public sector sites and accelerate delivery of affordable housing.

Innovation and skills

- Collaboration with Government, agencies and academia to explore how the region can benefit from expertise in this field and to consider collaboration approaches and projects which can maximise the potential benefits of offsite construction.
- Link construction programmes, contractors and developers to Housing Construction and Infrastructure (HCI) Skills Gateway programme.
- Enhanced engagement with industry.

Strategic sites

- Continue business case development for each of the strategic sites. Taken together, these sites will deliver over 45,000 new homes.
- Establish a Strategic Sites Lead Officers Group to share learning; best practice; models; and identify collaboration opportunities to leverage investment and resource.
- Develop a strong, ambitious regional vision across the seven sites demonstrating their ability to be economic drivers of change in South East Scotland.

Infrastructure and land

- Consider formation of a Regional Infrastructure Forum comprising key infrastructure providers. It would seek to align through collaborative working a delivery plan for infrastructure that will enable, accelerate and support inclusive growth across the region, which is developed and aligned alongside future national and regional development and infrastructure strategies and investment decisions.

- Explore emerging work on an Edinburgh Land Commission. There may be scope to consider whether this model should and could be rolled out across the region or separately for each local authority area.

Housing company

Thirty-three homes have been purchased by Edinburgh Living MMR LLP to date, the latest being 11 homes at the Hailesland Place development, a mix of social rent and mid-market rent homes. The next homes will be purchased at Greendykes (56) and Pennywell Town Centre (12) over the coming months.

Key Risks

- The development and delivery of a successful regional housing work programme requires commitment and resource from across regional partners, national agencies and Scottish and UK Government.

Alignment with wider programme

- Housing is a key social, economic and environmental driver. Greater integration across these drivers and City Region Deal policy themes is essential to support the growth requirements of the region and to deliver new communities which deliver the quality of place that ensures the South East of Scotland is a desirable place for people to live and for businesses to invest.
- Regional housing partners have developed a work programme that has synergies between work being developed through thematic areas of the Deal: IRES Programme; Transport Appraisal Board (TAB); Innovation; and the emerging Regional Growth Framework.
- Linking construction programmes, contractors and developers to Housing Construction and Infrastructure (HCI) Skills Gateway programme. Ensuring that regional skills shortages are tackled, and employment opportunities are directed to communities within the city region and that individuals facing disadvantages in the labour market are targeted.

7. The Year Ahead



Key milestones that are expected in 2019/20 are shown in the table below:

Date	Milestone
3 Sep 19	<ul style="list-style-type: none"> Joint Committee meeting where the following items will be considered: Business case for the Usher Institute. Regional Growth Framework proposition. Updates from the Housing and Transport Programmes.
Autumn 2019	<ul style="list-style-type: none"> Shared vision and approach to Community and Social Benefits agreed
Autumn 2019	<ul style="list-style-type: none"> Data-driven Innovation and Housing and Construction infrastructure and targeted Skills Gateways provision operational
6 Dec 19	<ul style="list-style-type: none"> Joint Committee meeting where the following items are expected to be considered: Dunfermline Strategic Housing Site Business Case Monitoring and Evaluation Framework.
Feb 20	<ul style="list-style-type: none"> Commencement of construction of Grade Separated Junction at Queen Margaret University Food and Drink Innovation Campus.
6 Mar 20	<ul style="list-style-type: none"> Easter Bush Business case expected to be considered by Joint Committee
Mar 20	<ul style="list-style-type: none"> The Fife Industrial Investment Innovation Programme will break ground on two sites, in Glenrothes and Dunfermline.
Spring 2020	<ul style="list-style-type: none"> Intensive Family Support Service pilots commence
5 Jun 20	<ul style="list-style-type: none"> Joint Committee meeting to consider business case for Edinburgh Innovation Park (Queen Margaret University)
Jul 20	<ul style="list-style-type: none"> Construction of the National Robotarium commences
Summer 2020	<ul style="list-style-type: none"> All IRES Programme projects operational
Summer 2020	<ul style="list-style-type: none"> Construction at Dunard Centre commences.

Contacts and Further Information



Programme Management Office

- **Andy Nichol** Programme Manager: andy.nichol@edinburgh.gov.uk , 0131 529 4461
- **Mark Baillie** Lead Communications Officer: mark.baillie@ei.ec.ac.uk , 0131 651 4297
- **David Baxter** Senior Programme Officer: david.baxter@edinburgh.gov.uk , 0131 529 3224
- **David Hanna** Senior Programme Officer: david.hanna@edinburgh.gov.uk , 0131 529 3161
- **Henna Khatoon** Lead Accountant: henna.khatoon@edinburgh.gov.uk , 0131 529 3225
- **Ken Shaw** Integrated Regional Employability and Skills Manager: ken.shaw@edinburgh.gov.uk ,
0131 529 3476
- **General enquiries:** esescr.citydeal@edinburgh.gov.uk

Further Information

- Keep up to date with the latest news and join our mailing list at www.acceleratinggrowth.org.uk
- [Data-Driven Innovation website](#)
- Download all Joint Committee reports including approved business cases at the [City of Edinburgh Council Committee library](#) website.
- Visit the [webcast library](#) to view recordings of each Joint Committee meeting.

